

20
20

PALLIATIVE CARE TASMANIA LIMITED
ANNUAL REPORT



PalliativeCare
TASMANIA

CONTENTS



03	ABOUT
04	WELCOME MESSAGE FROM CHAIR AND CEO
05	STRATEGIC AREAS
	<hr/>
06	SECTOR DEVELOPMENT
07	EDUCATION
08	RESOURCES
	<hr/>
09	MEMBERS
10	KEY EVENTS
13	ADVOCACY
	<hr/>
14	SOCIAL MEDIA
15	BOARD AND TEAM
	<hr/>
16	ACKNOWLEDGEMENTS
17	FINANCIALS
33	CONTACT
	<hr/>

ABOUT



Palliative Care Tasmania is the peak body for the palliative care sector across Tasmania. Operating for 25 years, we are a not for profit organisation that represents palliative care services, providers and professionals. We work to ensure all Tasmanians, no matter where they live, have access to quality palliative care support and services they need.

1

THE VISION THAT INSPIRES US

All Tasmanians with a life-limiting illness, together with those they value, are supported to live, die and grieve well

2

THE MISSION THAT DRIVES US

To lead and influence policy and practice, advocate, educate and support people of all ages to access quality palliative care.

3

THE VALUES THAT GUIDE US

- Respect for people and their choices
- Compassion in the decisions we make
- Honesty in our interactions
- Wellness of the whole person
- Integrity in all we do

It is with great pleasure that we present the Palliative Care Tasmania Limited (PCT) 2019/20 annual report.

Following an unprecedented year of global instability and significant change, we are incredibly proud of how the organisation has adapted and how it continues to deliver for its Members and for the Tasmanian community.

Over the past 12 months and through the onset of COVID-19 pandemic, PCT has maintained its focus on empowering the palliative care sector and community to support people living with a life limiting illness, along with their carers and families, to make informed decisions.

Education and access to information has arguably never been more important. PCT mobilised early in the pandemic, modifying all education programs. Face to face sessions across the State were reimagined and amalgamated into state-wide virtual sessions.

Increased numbers attended our virtual education with more service providers accessing specific palliative care education to meet their own changing needs.

Our commitment to building capacity for health professionals and service providers to deliver high quality care and support in palliative care has never wavered. In addition to sector development and education activities like the successful GP Education Program, the Palliative Care 2019 Conference was a highlight with over 210 Tasmanian delegates learning, connecting, and exchanging expertise over a full two-day program in Hobart.

Palliative Care Tasmania has been actively advocating for the sector at all levels of government and with key stakeholders locally and nationally. Our work included key contributions to the Aged Care Royal Commission and COVID-19 pandemic response.

For the first time the Premier acknowledged Palliative Care in his State of the State address and in conjunction with Palliative Care Australia, PCT has continued to lead and inform policy and research agendas in relation to best practices in palliative care.

Our Members are at the forefront of our priorities. As a Member organisation we are dedicated to helping strengthen and support collaboration through a number of projects and initiatives and networking events.

PCT continued to auspice and support 'The Bereavement Care Network' and in 2019 we took the lead in the 'Strengthening Communities of Care' workforce development project which will further help strengthen the sector and encourage collaboration.

A sincere thank you to the Directors of the Board. They are a dedicated group of individuals who do a lot of work in the background to keep the organisation moving forward. Thank you as well to our small team of dedicated and committed staff who work hard to support the sector and Tasmanian communities.

As the community and our sector continues to navigate through ongoing change and uncertainty, PCT will need to find innovative approaches to deliver our services and support to the sector and to the community. We will continue to focus on raising the profile of palliative care to ensure there is universal awareness of the critical role our diverse sector plays in delivering palliative end of life care for all Tasmanians.

We look forward to continuing that journey with you in 2020/21.

**Felicity Weeding, Acting Chair of the Board
& Colleen Johnstone, CEO**



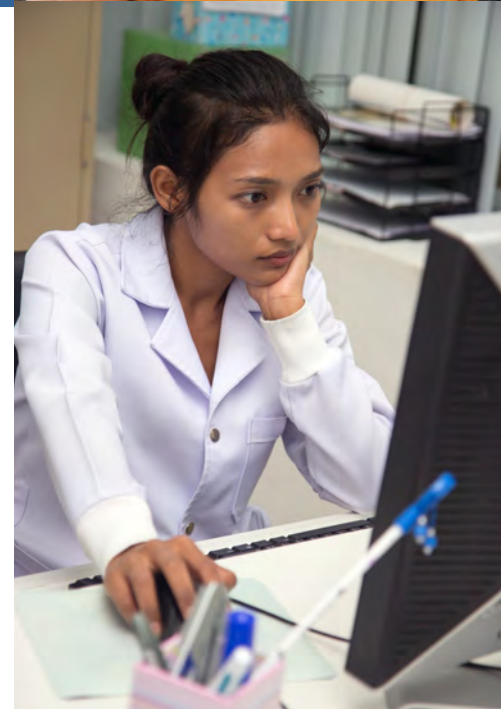
STRATEGIC AREAS

- **Strengthening** Palliative Care Tasmania is a strong, sustainable organisation.
- **Empowering** the community and the palliative care and community services sector to increase awareness of dying as a part of life.
- **Building** capacity towards a capable and skilled palliative care workforce and an informed, supportive and capable community.
- **Leading** as the Peak Body for palliative care in Tasmania.

Sector Development

Palliative Care Tasmania has continued to build on the success of our education programs for both health professionals and for the community. 2019/20 saw an increase in demand for our education across all segments. Experienced educators offering training in real time has been a proven formula for ongoing engagement. The content of sessions continues to evolve in order to keep up with the changing landscape of palliative care locally, nationally and internationally. PCT has delivered education, information and engagement activities at 212 events to over 2700 participants.

Sessions included: Palliative Care and the Palliative Approach, Medical Goals of Care, Advance Care Directive, End of life Choices – planning and decision making, Grief and Loss – supporting others & the importance of self-care and Ageing and Well-being.



"Thank you so much it was a great session that allowed for important conversations and learning to happen."

GP Education

A key focus for Palliative Care Tasmania in 2019/20 was to provide education to Tasmanian general practitioners focusing on palliative care approaches, services, understanding the legalities of advanced end of life planning in Tasmania and what local and national resources are available to support their work, practice and patients.

Our outreach team visited practices and delivered lunch box and online sessions that increased GP awareness of palliative care services within Tasmania. The sessions also focused on increasing the understanding of the role of the Guardianship Administration Board, its authority and the process for appointing enduring guardians to make decisions affecting the lives of people unable to make their own decisions due to diminished capacity or illness. PCT was also able to provide resources such as the 'Referral Pathway for Palliative Care in Tasmania for General Practice'.

Bereavement Education

PCT continued its program of bereavement care education in 2019. Between 1 July 2019 to 30 June 2020 a total of 44 workshops were held, attracting 492 participants.

As part of its bereavement care education program, PCT specifically focusses on self-care, compassion fatigue and accessing resources to support people who are dying and their families through different grief triggers (e.g. diagnosis, loss of mobility etc.).

In addition to its bereavement care program, PCT has continued to auspice the Tasmanian Bereavement Care Network (BCN). PCT actively promotes the BCN across all of education programs and is working, as part of the BCN Advisory Group to facilitate the future sustainability of the network.



"Thank you, first time hearing these topics. Very informative and well presented."

(Glenview support worker)



Aged Care Education

In our submission to the Royal Commission into Aged Care Quality and Safety consultation, PCT highlighted the need for stronger palliative and end of life care education in the aged care sector.

We followed this recommendation with the development of bespoke training offered in 2019/20. The training to residential aged care staff increased their skills, knowledge and understanding of palliative and end of life issues and provided greater understanding of local services and options available.

Education included both clinical and non clinical topics and was welcomed by the sector and highly regarded by many participants.

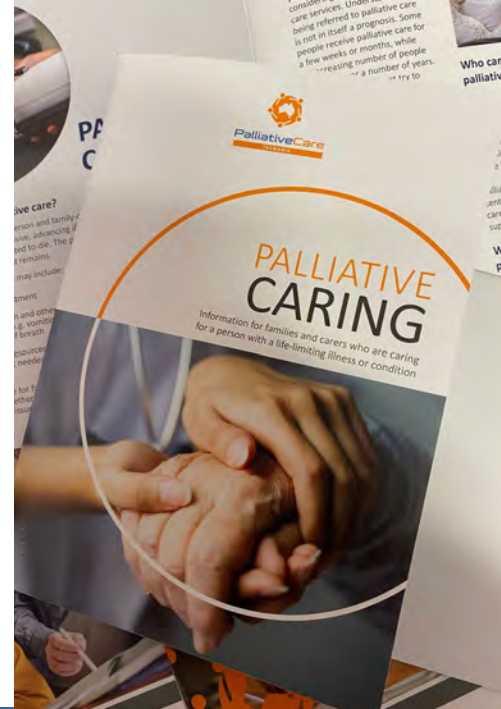
PCT has delivered 57 education sessions with a total of 527 attendees for community, residential aged care facilities (RACF) and GPs.



Resources

PCT develops and disseminates information about palliative and end-of-life care through a series of resources aimed at people with life-limiting conditions, their family members and carers and organisations and service providers in our sector. Our online and printed resources are developed by our highly experienced team, both locally and nationally through our colleagues in our federated state peak organisations. We also work to develop and deliver resources that are relevant and effective meeting community needs, utilising stakeholder input and feedback.

Over the past 12 months some of the resources we have produced include 'Young Carers - a guide for educators and those working with young carers', Palliative Care Assessment and Services Guides for each Tasmanian region and 'Palliative Caring', a 60+ page booklet for Tasmanians faced with a life limiting illness and looking for palliative care information in Tasmania.



"Very happy with resources provided and the depth of the information, as there is limited knowledge about services available."

(GP Session)



Online Resources

PCT's new website houses a full range of resources for the community including specific information on Advance Care Planning, Grief and Loss, Building Compassionate Communities, resources in other languages other than English, volunteer information and other helpful information to support the community.

For health care professionals and aged care workers the online resources include up-to-date information on Advance Care Planning, Medical Goals of Care and Limitations of Treatment, a GP Portal, Guardianship and Administration Board information and the National Palliative Care Standards.

The online resources continue to grow each year and will continue to grow as we add more information tailored to our Members.





MEMBERS

125 MEMBERS

22 ORGANISATIONS



A committed and diverse membership is vitally important to ensure we have a strong, independent and collective voice to advocate for sector development and improvements in access to quality palliative care for all Tasmanians.

Our Members include health professionals across all sectors, specialist and generalist palliative care services, aged care, disability care, peak bodies, as well as consumers and interested members of the community.

Collectively, the PCT membership holds incredible knowledge and lived experience about the challenges the sector faces and the opportunities those challenges can bring.

We are committed to growing our Member community across the state and continuing to focus on delivering both benefits to Members and outcomes to the sector.

Our state-wide Member profile is:

- 70% South and State-wide Members
- 20% North West Members
- 10% Northern Members

KEY EVENTS

2019 Tasmanian Palliative Care Awards

The Awards were held at Government House to acknowledge, celebrate and showcase the achievements of organisations, teams and individuals providing quality palliative care.

Congratulations to not only the winners but all our finalists, other nominees and everyone who works in the palliative care sector and is so committed to improving the end of life experience for all Tasmanians.

The 2019 winners were:

Outstanding Palliative Care Organisation

Specialist Palliative Care Service Community Team - South

Outstanding Palliative Care Professional

Carolyn Bax - RN Whittle Ward and Dr Rosemary Ramsay from North West Specialist Palliative Care Service

Outstanding Palliative Care Volunteer

Julie Siebert - palliative care volunteer for Volunteer Support Service North

Outstanding Palliative Care Community Charter Advocate

Li-ve



2019 State Conference

PCT's first **Tasmanian Palliative Care Conference** brought together leaders in palliative care from around the state.

Over 210 delegates experienced a two-day comprehensive program with a strong line-up of speakers from Australia and around the world.

The line-up of speakers included Michael Hebb from the US who was responsible for the Death Over Dinner movement, and Dr Lucy Hone from the New Zealand Institute of Wellbeing and Resilience. Australian speakers include leading end of life chef, Peter Morgan-Jones, Sue Hanson from the NSW Agency for Clinical Innovation and from a local perspective, Dr Tim Flanagan and Dr David Kenner to name a few.

“An absolutely phenomenal, thought provoking and educational two days.”

Building a capable, compassionate and resilient Tasmania

With local, national and international speakers and a strong number of delegates from across the state, the conference addressed the question of '': **"How services can work together to ensure the best possible support for people with life-limiting illnesses.'**

The Tasmanian Palliative Care Conference and trade show was held at Wrest Point Casino on November 14-15th 2019.

Thank you to our sponsors MIPS, ANMF, HESTA, MENARAINI, Caring at Home, and Tasmanian Perpetual Trustees.



National Palliative Care Week

National Palliative Care Week 2020 highlighted the important conversations in the community about the benefits of quality palliative care and celebrated the amazing dedication of all those working and volunteering in palliative care across Australia. National Palliative Care Week (NPCW) was held from Sunday 24 May – Saturday 30 May, with the theme “Palliative Care... It’s more than you think”.

PCT held a number of events across the week and also donated wheelchairs to the Melwood Unit at Calvary Hospital (St Luke’s Campus), iPads to the Gibson Unit at Calvary Hospital (St Johns Campus), and care packs to the Specialist Palliative Care Units in the north, north west, and south of the state. The Country Women’s Association also knitted hundreds of bears for children to make their experiences of palliative care not so scary, which PCT disseminated to all of the units across Tasmania.



Dying to Talk Expo

Dying to Talk Expo was held in Launceston on the 25th May. The event was designed to open up conversations about end of life care and the tricky questions that people often have but are unsure how to answer – death, dying, ageing, grief, palliative care and home care options. These are difficult conversations and the Expo delivered to the Northern Tasmanian community an opportunity to investigate and gather information in a non threatening, positive way.

The Expo featured organisations such as Australian Nursing & Midwifery Federation, Senior Helpers National, Independent Living Centre Tasmania, Rae and Partners, Finney Funeral Services, Li-ve Tasmania, THS Specialist Palliative Care Service, Calvary St Luke’s Hospital, Masonic Care Tasmania and many more.



ADVOCACY

PCT continues to provide leadership on palliative care policy and advocacy issues. We have contributed to the state and national discussion on palliative care in the form of policy submissions and position statements, through engagement with all levels of government and through community engagement activities including National Palliative Care Week and the Tasmanian Palliative Care Conference.

Nationally, PCT works in collaboration with Palliative Care Australia and other state peak bodies to advance the national agenda.

PCT has been a part of consultations to inform national initiatives such as the review of the Advance Care Directive Framework 2011, and relevant National Palliative Care Strategy projects.

PCT has a strong and successful relationship with government which allows for open discussions about the issues important to our Members.

Key highlights include:

- Lobbied for state-wide consistent after-hours phone services for palliative care patients.
- Continued to fight for designated palliative care beds on the North West coast.
- Consulted and contributed to draft legislation on Voluntary Assisted Dying Bill.
- Contributed nationally to COVID-19/palliative care discussions and policy decisions.
- Contribute to national submissions into The Royal Commission into Aged Care Quality and Safety.
- Contributed and supported reconciliation across palliative care nationally.





CONNECT



1200



175



215

Social Media

Social media engagement has grown during the period and remains a key channel for engagement across the sector and into the community. We are exploring new ways to connect with our online community and developing content that informs and inspires.

Website

The new PCT website was launched in 2019 with added functionality for Members, the community and the team.

Media

PCT continues to feature in the media in print, online and on broadcast news. PCT published a number of media releases in the past financial year.



BOARD OF DIRECTORS & TEAM

PCT is led by a Board of Members. They include health professionals as well as members from community and business backgrounds and bring with them a rich and diverse range of experience and knowledge.

- Felicity Weeding (Acting Chair)
- Alisa McLaren
- Ann Allanby
- Catherine Martin (Company Secretary)
- Kristen Aylmer
- Leigh Connell
- Peter Bradley

We would like to thank former chair Graeme Matthews for his contribution to the Board.

We acknowledge and thank the incredible efforts of our team that continue to deliver outcomes across the state. The PCT team is only 4.8 full time equivalents with everyone working part time. It takes incredible commitment and teamwork to ensure the work is delivered.

Chief Executive Officer

Colleen Johnstone

Manager, Community Engagement

Sharon King

Manager, Comms, Policy + Bus Development

Veney Hiller

Senior Community Development Officer

Gaylene Cunningham

Administration Officer

Rose Grubits

Community Engagement Officer

Louise Bland

Casual Clinical Educators

Sally Bonde and Fiona Lopa

Special thanks to

Rahme Mohamad

We would like to thank former team members Prue Cripps and Stefany Stockwin-Wunsch for their contributions in 2019/20.

ACKNOWLEDGEMENTS

Funding Partners

We acknowledge and thank our funding partners for their ongoing support:

- The Tasmanian State Government
- The Department of Health
- Tasmanian Community Fund
- Palliative Care Australia
- Calvary Hospital
- Clarence City Council,
- TasCOSS (Essential Tech Fund)

Community Partners

We could not do our work without the support of our sponsors and community partners:

- MIPS
- Australian Nursing and Midwifery Federation
- HESTA
- TPT Wealth
- & all of our Exhibitors.



20
20

PALLIATIVE CARE TASMANIA LIMITED
FINANCIAL STATEMENTS



PalliativeCare
TASMANIA

PALLIATIVE CARE TASMANIA LIMITED
ABN: 26 595 047 105

FINANCIAL STATEMENTS
FOR THE YEAR ENDED 30 JUNE 2020



PALLIATIVE CARE TASMANIA LIMITED

ABN: 26 595 047 105

CONTENTS

FOR THE YEAR ENDED 30 JUNE 2020

Balance sheet	1
Income statement	2
Statement of Cashflows	3
Statement of Changes in Equity	4
Notes to the financial statements	5
Declaration	10
Compilation report	11

PALLIATIVE CARE TASMANIA LIMITED

ABN: 26 595 047 105

BALANCE SHEET

FOR THE YEAR ENDED 30 JUNE 2020

	Note	2020 \$	2019 \$
Current assets			
Cash and cash equivalents	3	472,130	218,840
Trade and other receivables	4	7,284	16,723
Other current assets	5	2,700	-
Total current assets		<u>482,114</u>	<u>235,563</u>
Non-current assets			
Property, plant and equipment	6	34,456	40,617
Total non-current assets		<u>34,456</u>	<u>40,617</u>
Total assets		<u>516,570</u>	<u>276,180</u>
Current liabilities			
Trade and other payables	7	28,601	34,848
Provisions	8	16,691	42,648
Total current liabilities		<u>45,292</u>	<u>77,496</u>
Total liabilities		<u>45,292</u>	<u>77,496</u>
Net assets		<u>471,278</u>	<u>198,684</u>
Equity			
Retained earnings		471,278	198,684
Total equity		<u>471,278</u>	<u>198,684</u>

The accompanying notes form part of these financial statements.
This report should be read in conjunction with the attached compilation report of BDO (TAS) Pty Ltd.

PALLIATIVE CARE TASMANIA LIMITED

ABN: 26 595 047 105

INCOME STATEMENT

FOR THE YEAR ENDED 30 JUNE 2020

	2020	2019
	\$	\$
Income		
Cashflow Boost	41,260	-
Conference Income	51,185	13,071
Donations	4,993	3,934
Education Income	4,922	9,721
Gain/Loss on Disposal of Asset	-	7,061
Grants & Funding	9 982,545	593,165
Interest Received	12,122	796
Miscellaneous Sales	-	695
Study Days	-	649
Subscriptions	5,759	6,459
	<u>1,102,786</u>	<u>635,551</u>
Expenses		
Depreciation Expense	11,315	14,313
Direct Project Costs	183,433	22,540
Employment Costs	475,360	451,372
Fundraising expenses	721	-
OH-Conference Costs	33,440	88,966
OH-Office Equipt under \$1,000	2,586	3,361
Overheads- General & Admin	123,337	181,674
	<u>830,192</u>	<u>762,226</u>
Net profit (loss)	<u>272,594</u>	<u>(126,675)</u>
Retained earnings at the beginning of the financial year	198,684	325,359
Retained earnings at the end of the financial year	<u><u>471,278</u></u>	<u><u>198,684</u></u>

The accompanying notes form part of these financial statements.
This report should be read in conjunction with the attached compilation report of BDO (TAS) Pty Ltd.

PALLIATIVE CARE TASMANIA LIMITED

ABN: 26 595 047 105

STATEMENT OF CASHFLOWS

FOR THE YEAR ENDED 30 JUNE 2020

	2020		2019
	\$		\$
OPERATING			
Receipts from grants and members	1,100,103		619,053
Interest received	12,122		796
Payments to suppliers and employees	- 853,781	-	733,799
Total cashflows from Operating activities	258,444	-	113,950
INVESTING			
Proceeds from sale of PPE	-		17,250
Payment for PPE	- 5,154	-	5,186
Total cashflows from investing	5,154	-	12,064
NET CASHFLOWS	253,290	-	101,886
Cash balance 1 July	218,840		320,726
Net Cash Movement	253,290	-	101,886
Cash balance 30 June	472,130		218,840

The accompanying notes form part of these financial statements.
This report should be read in conjunction with the attached compilation report of BDO (TAS) Pty Ltd.

PALLIATIVE CARE TASMANIA LIMITED

ABN: 26 595 047 105

STATEMENT OF CHANGES IN EQUITY

FOR THE YEAR ENDED 30 JUNE 2020

Balance 1 July 2018	325,359
Surplus 2019	-126,675
Balance 30 June 2019	198,684
Surplus 2020	272,594
Balance 30 June 2020	471,278

The accompanying notes form part of these financial statements.
This report should be read in conjunction with the attached compilation report of BDO (TAS) Pty Ltd.

PALLIATIVE CARE TASMANIA LIMITED

ABN: 26 595 047 105

NOTES TO THE FINANCIAL STATEMENTS

FOR THE YEAR ENDED 30 JUNE 2020

The financial statements cover Palliative Care Tasmania Limited, a company limited by guarantee, and have been prepared to meet the needs of the members and the requirements of the ACNC Act 2012.

Comparatives are consistent with prior years, unless otherwise stated.

1 Basis of preparation

The directors have determined that the company is non-reporting since there are unlikely to be any users who would rely on the general-purpose financial statements.

The special purpose financial statements have been prepared in accordance with the significant accounting policies described below and do not comply with any Australian Accounting Standards unless otherwise stated.

The financial statements have been prepared on an accruals basis and are based on historical costs modified, where applicable, by the measurement at fair value of selected non-current assets, financial assets and financial liabilities.

Significant accounting policies adopted in the preparation of these financial statements are presented below and are consistent with prior reporting periods unless otherwise stated.

2 Summary of significant accounting policies

Revenue and other income

Grant revenue is recognised in accordance with AASB1058. Other income is recognised when it is derived and payable to the company.

Cash and cash equivalents

Cash and cash equivalents comprises cash on hand, demand deposits and short-term investments which are readily convertible to known amounts of cash and which are subject to an insignificant risk of change in value.

Property, plant and equipment

Each class of property, plant and equipment is carried at cost less, where applicable, any accumulated depreciation and impairment.

Depreciation

Property, plant and equipment, excluding freehold land, is depreciated on a straight-line basis over the assets useful life to the company, commencing when the asset is ready for use.

These notes should be read in conjunction with the attached compilation report of BDO (TAS) Pty Ltd.

PALLIATIVE CARE TASMANIA LIMITED

ABN: 26 595 047 105

NOTES TO THE FINANCIAL STATEMENTS

FOR THE YEAR ENDED 30 JUNE 2020

Employee benefits

Provision is made for the company's liability for employee benefits arising from services rendered by employees to the end of the reporting period. The liability has not been discounted to present value nor future wage increases considered.

Covid-19: Critical accounting judgements, estimates and assumptions

The preparation of the financial statements requires management to make judgements, estimates and assumptions that affect the reported amounts in the financial statements. Management continually evaluates its judgements and estimates in relation to assets, liabilities, contingent liabilities, revenue and expenses. Management bases its judgements, estimates and assumptions on historical experience and on other various factors, including expectations of future events, management believes to be reasonable under the circumstances. The resulting accounting judgements and estimates will seldom equal the related actual results. The judgements, estimates and assumptions that have a significant risk of causing a material adjustment to the carrying amounts of assets and liabilities (refer to the respective notes) within the next financial year are discussed below.

Coronavirus (COVID-19) pandemic

Judgement has been exercised in considering the impacts that the Coronavirus (COVID-19) pandemic has had, or may have, on the company based on known information. This consideration extends to the nature of the products and services offered, customers, supply chain, staffing and geographic regions in which the company operates. Other than as addressed in specific notes, there does not currently appear to be either any significant impact upon the financial statements or any significant uncertainties with respect to events or conditions which may impact the company unfavourably as at the reporting date or subsequently as a result of the Coronavirus (COVID-19) pandemic.

Provisions

Provisions are recognised when the company has a legal or constructive obligation, as a result of past events, for which it is probable that an outflow of economic benefits will result and that outflow can be reliably measured.

These notes should be read in conjunction with the attached compilation report of BDO (TAS) Pty Ltd.

PALLIATIVE CARE TASMANIA LIMITED

ABN: 26 595 047 105

NOTES TO THE FINANCIAL STATEMENTS

FOR THE YEAR ENDED 30 JUNE 2020

	Note	2020 \$	2019 \$
3 Cash and cash equivalents			
ANZ Online Account		349,466	144,606
ANZ Working Account		1,142	733
ANZ Debit Cards		7,487	4,617
MCMF Working Account		155	-
MCMF Long Term Account		112,048	-
Commonwealth Bank Account		-	11,057
Petty Cash South		97	97
CBA Debit Cards		-	5,012
Term Deposit Acc		-	51,698
Paypal Account		1,735	1,020
		<u>472,130</u>	<u>218,840</u>
4 Trade and other receivables			
Current			
Trade Debtors		649	7,295
GST Collected		(8,527)	(2,875)
GST Paid		15,162	12,303
		<u>7,284</u>	<u>16,723</u>
5 Other assets			
Current			
Security Bond		2,700	-
		<u>2,700</u>	<u>-</u>

These notes should be read in conjunction with the attached compilation report of BDO (TAS) Pty Ltd.

PALLIATIVE CARE TASMANIA LIMITED

ABN: 26 595 047 105

NOTES TO THE FINANCIAL STATEMENTS

FOR THE YEAR ENDED 30 JUNE 2020

	Note	2020 \$	2019 \$
6 Property, plant and equipment			
Leasehold land			
Leasehold Improvements at Cost		7,685	7,685
Leasehold Improvements Acc Dep		(7,685)	(7,685)
		<u>-</u>	<u>-</u>
Plant and equipment			
Website at Cost		13,686	13,686
Website Accum Depn		(13,686)	(11,457)
		<u>-</u>	<u>2,229</u>
Motor vehicles			
Vehicles at Cost		35,968	35,968
Vehicles Accum Depreciation		(13,030)	(7,296)
		<u>22,938</u>	<u>28,672</u>
Office furniture and equipment			
Office Equip at Cost		66,070	60,916
Furniture & Equip Accum Depn		(54,552)	(51,200)
		<u>11,518</u>	<u>9,716</u>
		<u>34,456</u>	<u>40,617</u>
7 Trade and other payables			
Current			
Trade Creditors		10,455	27,626
Employment Liabilities		18,146	5,953
Time in Lieu Payable		-	1,269
		<u>28,601</u>	<u>34,848</u>

These notes should be read in conjunction with the attached compilation report of BDO (TAS) Pty Ltd.

PALLIATIVE CARE TASMANIA LIMITED

ABN: 26 595 047 105

NOTES TO THE FINANCIAL STATEMENTS

FOR THE YEAR ENDED 30 JUNE 2020

	Note	2020 \$	2019 \$
8 Provisions			
Current			
Provisions		16,691	43,917
		<u>16,691</u>	<u>42,648</u>
9 Grants & Funding			
DHHS Workforce & Recruitment		500,000	500,000
Community Charter		0	18,620
Tasmanian Community Fund		32,483	0
GP & GAB Training		66,000	66,000
Strengthening Communities of Care		325,000	0
National Palliative Care Programme		53,162	0
Others / Small Grants		5,900	8,545
		<u>982,545</u>	<u>593,165</u>

These notes should be read in conjunction with the attached compilation report of BDO (TAS) Pty Ltd.

PALLIATIVE CARE TASMANIA LIMITED

ABN: 26 595 047 105

DIRECTOR'S DECLARATION

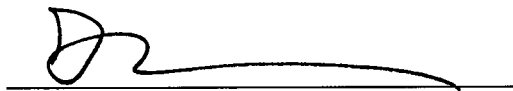
The directors have determined that the company is not a reporting entity and that this special purpose financial report should be prepared in accordance with the accounting policies described in Note 2 to the financial statements.

The director of the company declares that:

1. The financial statements and notes present fairly the company's financial position as at 30 June 2020 and its performance for the year ended on that date in accordance with the accounting policies described in Note 2 to the financial statements;
2. In the director's opinion there are reasonable grounds to believe that the company will be able to pay its debts as and when they become due and payable.

This declaration is made in accordance with a resolution of the director.

Director



Felicity Weeding

Dated 24 - 09 - 2020

PALLIATIVE CARE TASMANIA LIMITED

ABN: 26 595 047 105

COMPILATION REPORT

I have compiled the accompanying special purpose financial statements of PALLIATIVE CARE TASMANIA LIMITED which comprise the balance sheet as at 30 June 2020, and the income statement for the year then ended, a summary of significant accounting policies and other explanatory notes. The specific purpose for which the special purpose financial statements have been prepared is set out in the notes to the accounts.

The responsibility of the director

The director of PALLIATIVE CARE TASMANIA LIMITED is solely responsible for the information contained in the special purpose financial statements, the reliability, accuracy and completeness of the information and for the determination that the basis of accounting used is appropriate to meet their needs and for the purpose that the financial statements were prepared.

My responsibility

On the basis of information provided by the director, I have compiled the accompanying special purpose financial statements in accordance with the basis of accounting as described in the notes to the financial statements and APES 315: Compilation of Financial Information.

I have applied my expertise in accounting and financial reporting to compile these financial statements in accordance with the basis of accounting described in the notes to the financial statements. I have complied with the relevant ethical requirements of APES 110 Code of Ethics for Professional Accountants.

Assurance disclaimer

Since a compilation engagement is not an assurance engagement, I am not required to verify the reliability, accuracy or completeness of the information provided to us by management to compile these financial statements. Accordingly, I do not express an audit opinion or a review conclusion on these financial statements.

The special purpose financial statements were compiled exclusively for the benefit of the director who is responsible for the reliability, accuracy and completeness of the information used to compile them. I do not accept responsibility for the contents of the special purpose financial statements.

Firm BDO (TAS) Pty Ltd
Address Level 8
 85 Macquarie Street
 HOBART, TAS, 7000
Date 24 September 2020

Signed 
 Andrew Parsons

INDEPENDENT AUDITOR'S REPORT

To the members of Palliative Care Tasmania Ltd

Report on the Audit of the Financial Report

Opinion

We have audited the financial report of Palliative Care Tasmania Ltd (the registered entity), which comprises the balance sheet as at 30 June 2020 and the income statement for the year then ended, and notes to the financial report, including a summary of significant accounting policies, and the responsible entities' declaration.

In our opinion the accompanying financial report of Palliative Care Tasmania Ltd, is in accordance with Division 60 of the *Australian Charities and Not-for-profits Commission Act 2012*, including:

- (i) Giving a true and fair view of the registered entity's financial position as at 30 June 2020 and of its financial performance for the year then ended; and
- (ii) Complying with Australian Accounting Standards to the extent described in Note 1 and Division 60 of the *Australian Charities and Not-for-profits Commission Regulation 2013*.

Basis for opinion

We conducted our audit in accordance with Australian Auditing Standards. Our responsibilities under those standards are further described in the *Auditor's responsibilities for the audit of the Financial Report* section of our report. We are independent of the registered entity in accordance with the auditor independence requirements of the *Australian Charities and Not-for-profits Commission Act 2012* (ACNC Act) and the ethical requirements of the Accounting Professional and Ethical Standards Board's *APES 110 Code of Ethics for Professional Accountants* (the Code) that are relevant to our audit of the financial report in Australia. We have also fulfilled our other ethical responsibilities in accordance with the Code.

We believe that the audit evidence we have obtained is sufficient and appropriate to provide a basis for our opinion.

Emphasis of matter - Basis of accounting

We draw attention to Note 1 to the financial report, which describes the basis of accounting. The financial report has been prepared for the purpose of fulfilling the registered entity's financial reporting responsibilities under the ACNC Act. As a result, the financial report may not be suitable for another purpose. Our opinion is not modified in respect of this matter.



Responsibilities of responsible entities for the Financial Report

The responsible entities of the registered entity are responsible for the preparation of the financial report that gives a true and fair view and have determined that the basis of preparation described in Note 1 to the financial report is appropriate to meet the requirements of the ACNC Act and the needs of the members. The responsible entities' responsibility also includes such internal control as the responsible entities determine is necessary to enable the preparation of a financial report that gives a true and fair view and is free from material misstatement, whether due to fraud or error.

In preparing the financial report, the responsible entities are responsible for assessing the registered entity's ability to continue as a going concern, disclosing, as applicable, matters relating to going concern and using the going concern basis of accounting unless the responsible entities either intend to liquidate the registered entity or to cease operations, or have no realistic alternative but to do so.

Auditor's responsibilities for the audit of the Financial Report

Our objectives are to obtain reasonable assurance about whether the financial report as a whole is free from material misstatement, whether due to fraud or error, and to issue an auditor's report that includes our opinion. Reasonable assurance is a high level of assurance, but is not a guarantee that an audit conducted in accordance with the Australian Auditing Standards will always detect a material misstatement when it exists. Misstatements can arise from fraud or error and are considered material if, individually or in the aggregate, they could reasonably be expected to influence the economic decisions of users taken on the basis of this financial report.

A further description of our responsibilities for the audit of the financial report is located at the Auditing and Assurance Standards Board website (<http://www.auasb.gov.au/Home.aspx>) at:

http://www.auasb.gov.au/auditors_responsibilities/ar4.pdf

This description forms part of our auditor's report.

BDO Audit (TAS)

BDO Audit (TAS)

DAVID E PALMER

Partner

Hobart, ⁴30 September 2020

20

20

PALLIATIVE CARE TASMANIA LIMITED ANNUAL REPORT

Hobart Head Office

Mc Dougall Building
9 Ellerslie Rd, Battery Point
Hobart 7000

Launceston

11 Wellington St,
Launceston 7250

PH +61 3 6231 27 99

W pallcaretas.org.au

E team@pct.org.au

